

Vidya Bhawan Balika Vidyapeeth Lakhisarai

Arun Kumar Gupta

Class 10th

Subject - Biology

Date: - 11.07.21

How do Organisms Reproduce?

Sexual Reproduction in Plants

→ Flowers are the reproductive organs of plants.

→ A typical flower consists of four main whorls namely sepals, petals, stamen and pistil.

Types of Flowers

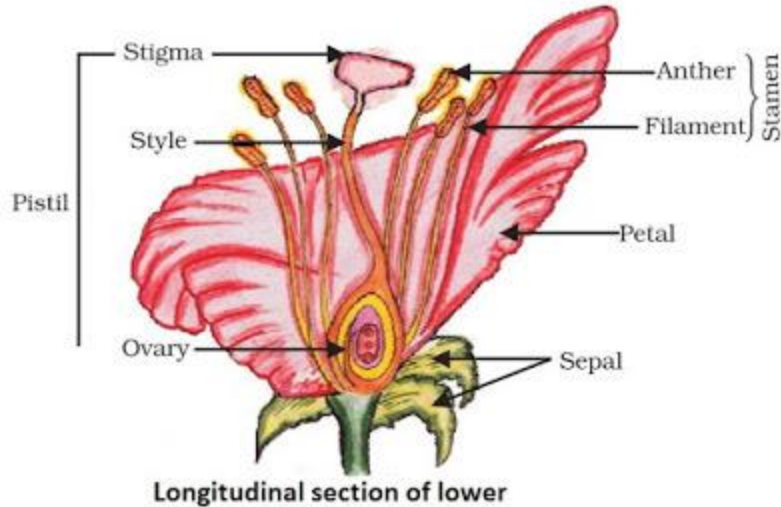
• **Bisexual flower**: Both male and female reproductive parts are present.

Example: Hibiscus, mustard.

• **Unisexual flower**: Either male or female reproductive part is present.

Example: Papaya, watermelon.

Structure of Flower



Process of Seed Formation

→ Pollen grains, produced in the anther, are transferred to the stigma of same flower (self pollination) or stigma of another flower (cross pollination) through agents like air, water or animals.

→ Pollen grains germinate and form pollen tubes which pass through style to reach upto the ovules present in ovary.

→ The fusion of male and female gametes is called fertilization. Zygote is produced inside the ovary.

→ Zygote divides to form embryo. Ovule develops thick coat and changes into seed gradually.

→ Ovary changes into fruit and other parts of flower fall off.